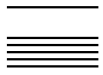


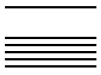
Your partners in the Canton of Zug

Economic promotion Zug	Zug Chamber of Economy	Fiduciary Association of Zug
Dr. Hans Marti	Tanja Süsmeier	Andreas Schaufelberger
Aabachstrasse 5	Gubelstrasse 11	Dorfstrasse 38
CH-6301 Zug	CH-6300 Zug	CH-6340 Baar
Telephone +41 (0)41 728 55 04	Telephone +41 (0)41 726 99 61	Telephone +41 (0)41 769 79 69
Fax +41 (0)41 728 55 09	Fax +41 (0)41 726 99 60	Fax +41 (0)41 769 79 89
economy@zug.ch	office@zwk.ch	info@ztv-zug.ch
www.zug.ch/economy	www.zwk.ch	www.ztv-zug.ch
Office for economy and labor	Small Business Association of the Canton of Zug	Association of Attorneys of the Canton of Zug
Dr. Bernhard Neidhart	Irène Castell-Bachmann	Werner Goldmann
Aabachstrasse 5	Gartenstrasse 4	Dorfstrasse 16
CH-6301 Zug	CH-6304 Zug	CH-6341 Baar
Telephone +41 (0)41 728 55 21	Telephone +41 (0)41 711 47 22	Telephone +41 (0)41 767 46 46
Fax +41 (0)41 728 55 29	Fax +41 (0)41 710 00 93	Fax +41 (0)41 767 46 25
bernhard.neidhart@zg.ch	info@zugergewerbe.ch	info@advokaten-zug.ch
www.zug.ch/awa	www.zugergewerbe.ch	www.advokaten-zug.ch
Tax administration of the Canton of Zug	HR-Services-Zug (HRSZ)	tfz technologie forum zug
Dr. Hugo Wyssen	Marion Russek	Ivo Studer
Bahnhofstrasse 26	Grafenaustrasse 5	Dammstrasse 19
CH-6301 Zug	6300 Zug	CH-6301 Zug
Telephone +41 (0)41 728 26 11	Telephone +41 (0)41 740 12 06	Telephone +41 (0)41 723 23 66
Fax +41 (0)41 728 26 96	vorstand@hrsz.ch	Fax +41 (0)41 723 23 69
hugo.wyssen@zg.ch	www.hrsz.ch	ivo.studer@ technologieforumzug.ch
www.zug.ch/tax		www.technologieforumzug.ch
Office for Migration	Businesspark Zug	
Georg Blum	Roman Bühler	
Aabachstrasse 1	Sumpfstrasse 26	
CH-6301 Zug	CH-6301 Zug	
Telephone +41 (0)41 728 50 50	Telephone +41 (0)41 747 01 40	
Fax +41 (0)41 728 50 59	Fax +41 (0)41 747 01 41	
georg.blum@zg.ch	info@businessparkzug.ch	
www.zug.ch/afm	www.businessparkzug.ch	



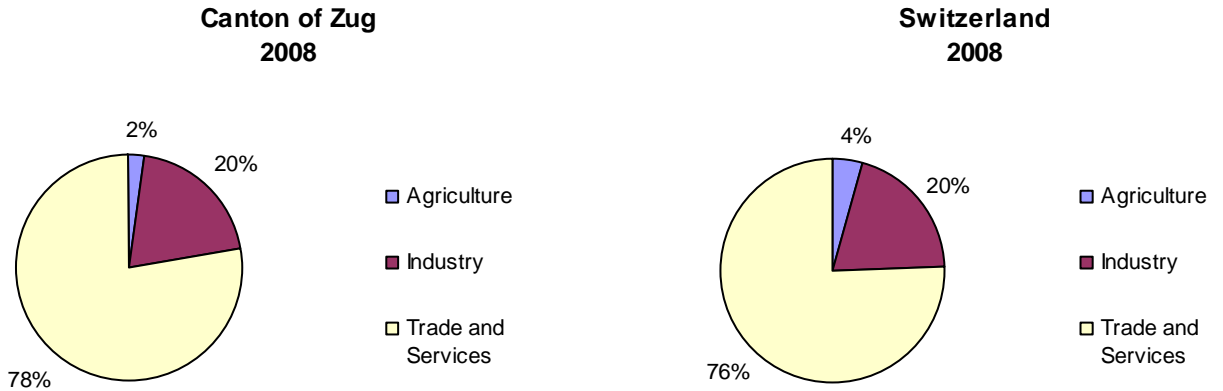
International enterprises

- Adidas, Cham
- Amgen (Schweiz, Europe, International) GmbH, Zug
- Astra-Zeneca AG, Zug
- Avery Denison Office Products Europe GmbH, Steinhausen
- BASF Intertrade AG, Zug
- Bausch & Lomb Swiss AG, Zug
- Biogen Idec International GmbH, Zug
- British American Tobacco International Ltd., Zug
- Bossard AG, Zug
- BP (Switzerland), Zug
- Bristol-Myers Squibb Products SA, Baar
- Burger King, Zug
- Cham Paper Group AG, Cham
- Cilag AG International (Johnson & Johnson), Zug
- Crypto AG, Steinhausen
- Emerson Process AG (ex. Fisher Rosemount), Baar
- ESAB Europe AG, Baar
- Glencore International, Baar
- Hugo Boss (Schweiz) AG, Zug
- Janssen-Cilag AG, Baar
- Landis + Gyr, Zug
- Mars AG, Zug
- Medela AG, Baar
- MIAG c.v. (Metro International), Baar
- Porsche (Schweiz) AG, Steinhausen
- PPC Electronic AG, Cham
- Rittmeyer AG, Baar
- Roche Diagnostics AG, Rotkreuz
- SABMiller (Europe) AG, Baar
- Schiller AG, Baar
- SHELL (Switzerland) AG, Baar
- Siemens Building Technologies, Zug
- Sika AG, Baar
- Smith & Nephew AG, Baar
- Taloca AG (Kraft Jacobs Suchard / Philip Morris), Zug
- Thomson Reuters, Zug
- Trumpf Maschinen AG, Baar
- ESEC, Steinhausen
- Varian International AG, Zug
- V-Zug AG, Zug

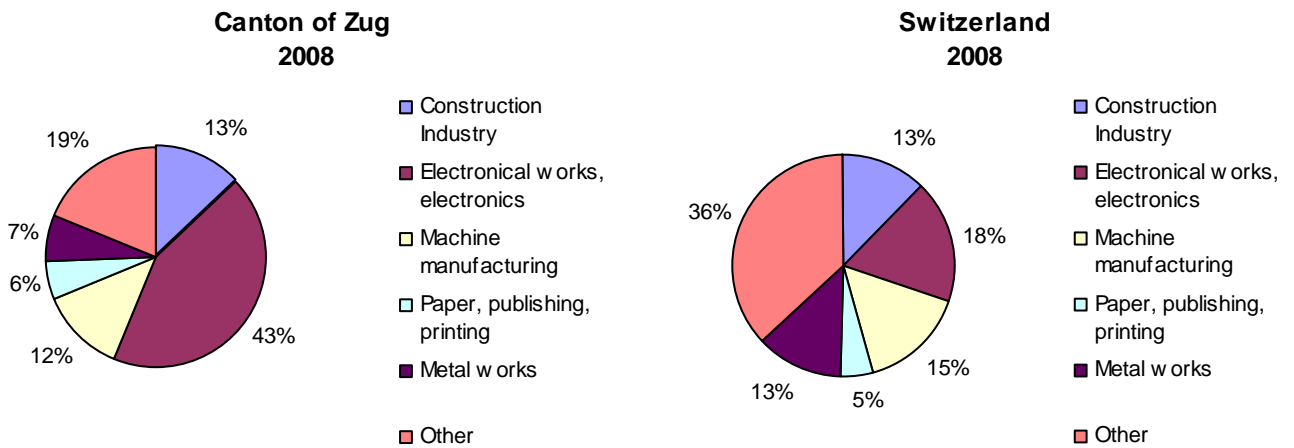


Commercial structure

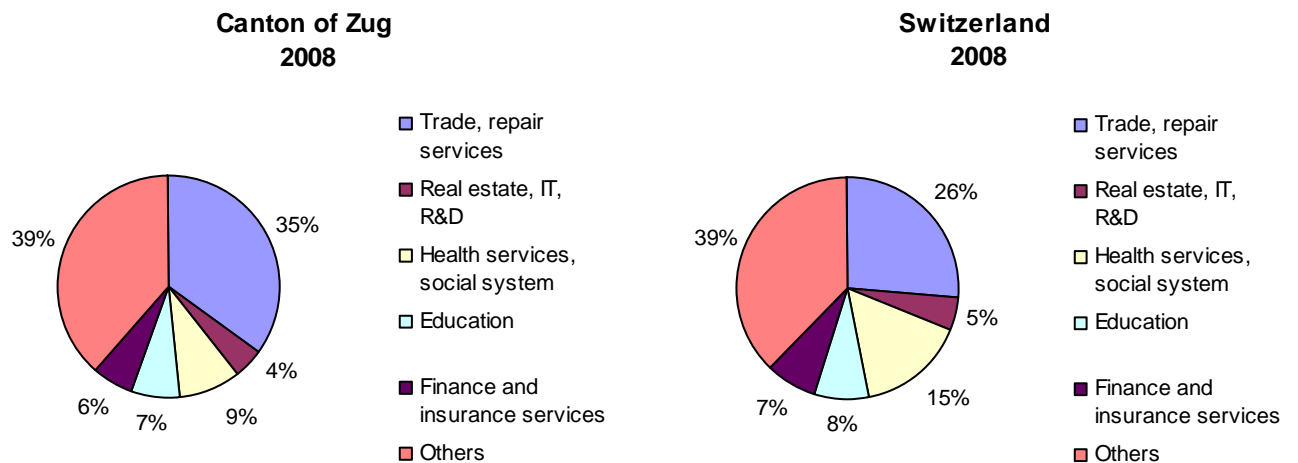
All sectors

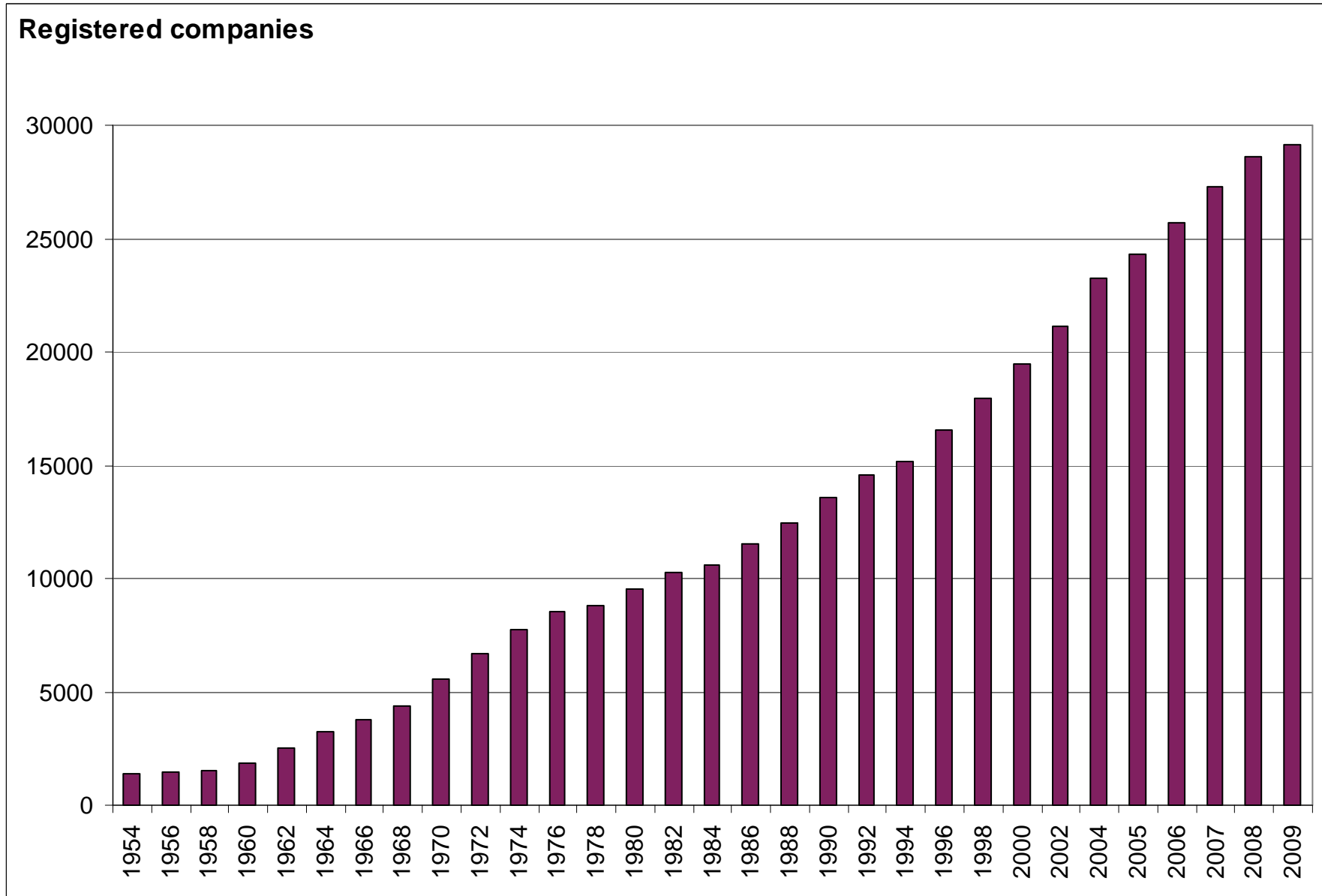


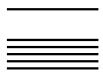
Industry



Trade and services



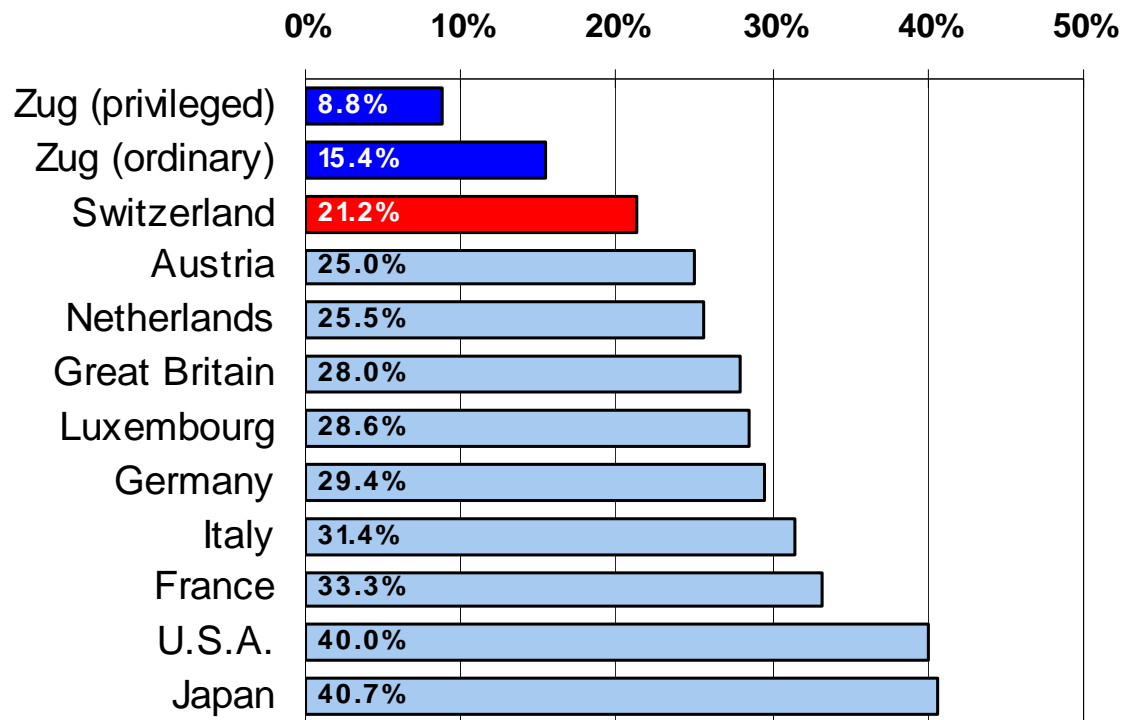




International tax comparison

Corporate entities

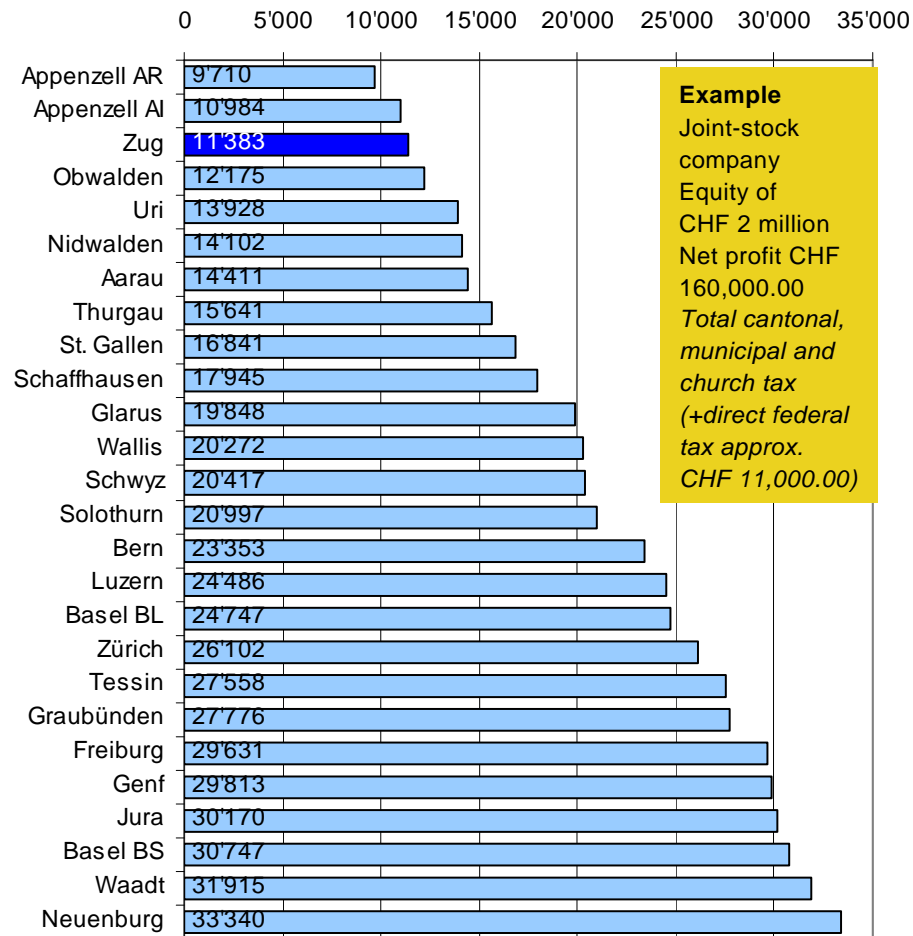
Average tax levy corporate profit



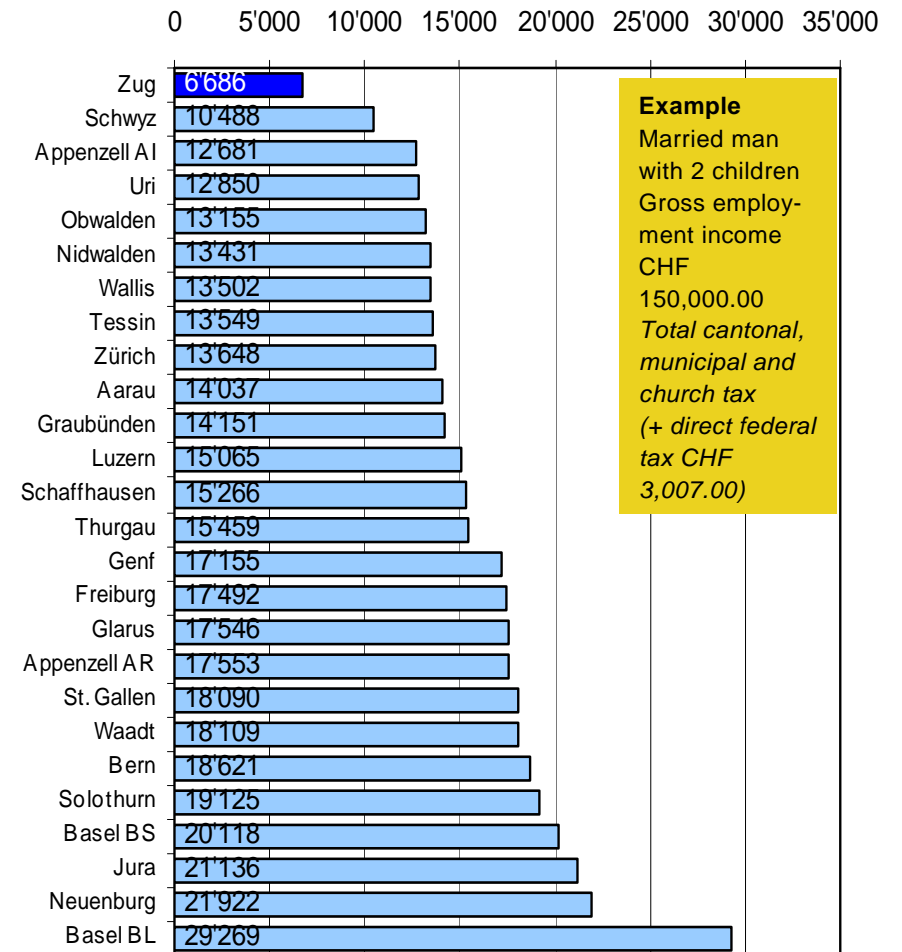
Sources: KPMG's Corporate and Individual Tax Rate Survey 2010
Income Tax Rates, 2010
Tax Department KPMG Zug

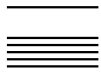
Intercantonal tax comparison (taxes in the capital of the respective canton)

Corporate entities



Private individuals





Work and residence permits

Foreigners who want to work in Switzerland must apply for a permit.

EU/EFTA citizens

With the introduction of the Free Movement of Persons (FMP) as part of the bi-lateral treaties with the EU/EFTA basically the salary and working conditions customary for the location and the line of business have to be maintained. For a stay with gainful employment of up to three months in a calendar year there is a registration obligation for employees, independent service providers and members of staff on assignment from abroad. The registration form (Meldeformular) can be completed electronically via www.bfm.admin.ch and sent off. Occupation for three months upwards is subject to a permit (enclosing an employment contract or a confirmation of the employer). In addition, occupation for more than four months is subject to the issuance of quotas. Applications are to be submitted to the Office for Matters regarding Foreigners (Amt für Ausländerfragen - KAFA).

Amt für Migration

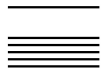
Aabachstrasse 1
6300 Zug
Telephone +41 (0)41 728 50 50
Fax +41 (0)41 728 50 59
E-Mail: info.afm@sd.zg.ch
www.zug.ch/afm

EU-2-States (Romania and Bulgaria) and non-EU/EFTA citizens

EU-2-Citizens are still subject to the issue of quotas. Priority of domestic employees still applies as well as the maintenance of salary and working conditions customary for the location and the line of business. Strict regulations apply to the gainful employment of Non-EU/EFTA citizens. For further information please contact the Office for Economy and Labour (Amt für Wirtschaft und Arbeit), where to the applications have also to be addressed.

Amt für Wirtschaft und Arbeit

Telephone +41 (0)41 728 55 20
Fax +41 (0)41 728 55 29
E-Mail: info.awa@vd.zg.ch
www.zug.ch/awa



Contact people in the communities

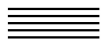
Zug	Baar	Risch
Marcel Grepper	Tanja Rogenmoser	Peter Trachsel
Stadthaus / Kolinplatz	Rathausstrasse 6	Zentrum Dorfmat
CH-6301 Zug	CH-6341 Baar	CH-6343 Rotkreuz
Telephone +41 (0)41 728 21 12	Telephone +41 (0)41 769 02 20	Telephone +41 (0)41 798 18 61
Fax +41 (0)41 728 23 71	Fax +41 (0)41 769 02 90	Fax +41 (0)41 798 18 88
marcel.grepper@zug.zg.ch	tanja.rogenmoser@baar.zg.ch	peter.trachsel@risch.zg.ch
www.stadtzug.ch	www.baar.ch	www.gemeinderisch.ch
Menzingen	Cham	Walchwil
Paul Schönenberger	Martin Mengis	René Arnold
Rathaus	Mandelhof	Dorfstrasse 4
CH-6313 Menzingen	CH-6330 Cham	CH-6318 Walchwil
Telephone +41 (0)41 757 22 10	Telephone +41 (0)41 784 47 47	Telephone +41 (0)41 759 80 16
Fax +41 (0)41 757 22 11	Fax +41 (0)41 784 47 74	Fax +41 (0)41 758 24 68
info@menzingen.zg.ch	martin.mengis@cham.zg.ch	rene.arnold@walchwil.zg.ch
www.menzingen.ch	www.cham.ch	www.walchwil.ch
Unterägeri	Hünenberg	Neuheim
Sylvia Derrer	Guido Wetli	Christof Wicky
Seestrasse 2	Chamerstrasse 11	Dorfplatz 5
CH-6314 Unterägeri	CH-6331 Hünenberg	CH-6345 Neuheim
Telephone +41 (0)41 754 55 00	Telephone +41 (0)41 784 44 00	Telephone +41 (0)41 757 21 31
Fax +41 (0)41 754 55 55	Fax +41 (0)41 784 44 99	Fax +41 (0)41 757 21 40
sylvia.derrer@unteraegeri.zg.ch	guido.wetli@huenenberg.zg.ch	christof.wicky@neuheim.zg.ch
www.unteraegeri.ch	www.huenenberg.ch	www.neuheim.ch
Oberägeri	Steinhausen	
Jürg Meier	Hans Schnellmann	
Rathaus	Bahnhofstrasse 3	
Alosenstrasse 2	CH-6312 Steinhausen	
CH-6315 Oberägeri	Telephone +41 (0)41 748 11 13	
Telephone +41 (0)41 754 70 25	Fax +41 (0)41 741 31 81	
Fax +41 (0)41 754 70 21	hans.schnellmann@steinhausen.zg.ch	
juerg.meier@oberaegeri.zg.ch	www.steinhausen.ch	
www.oberaegeri.ch		

The communities of the Canton of Zug

Community	Population ¹	Workplaces ²	Operating companies ²	Square meters	Altitude
Zug	26'713	31'851	3'994	35.45 km ²	425 m ü.M.
Oberägeri	5'645	1'535	323	35.60 km ²	737 m ü.M.
Unterägeri	8'277	2'695	416	27.10 km ²	729 m ü.M.
Menzingen	4'634	1'571	292	27.63 km ²	807 m ü.M.
Baar	22'443	17'038	2'102	24.88 km ²	444 m ü.M.
Cham	14'923	7'932	1'093	19.82 km ²	418 m ü.M.
Hünenberg	8'836	4'532	709	18.54 km ²	451 m ü.M.
Steinhausen	9'354	5'990	609	4.96 km ²	424 m ü.M.
Risch	9'301	7'789	716	20.95 km ²	417 m ü.M.
Walchwil	3'668	988	224	15.67 km ²	449 m ü.M.
Neuheim	2'037	1'081	166	7.95 km ²	666 m ü.M.
Total	115'831	83'002	10'644	238.55 km²	

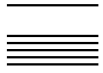
1 Status as of 31.12.2010

2 Source: Federal corporate census 2008

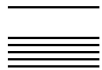


Kanton Zug Private schools

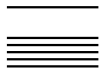
Institut Montana Zugerberg	
Balz Müller Institut Montana-Zug Switzerland CH-6300 Zug Telephone +41 (0)41 729 11 77 balz.mueller@montana-zug.ch www.montana-zug.ch	Language: German / English (bilingual) - Bilingual Elementary School Grade 1 to 6 - Primarschule 1. to 6. class - Schweizer Gymnasium 7. to 12. class
	Language: English - IGCSE Programme Grade 7 to 10 - IB Programme Grade 11 to 12
	Language: German - Gymnasium 7 to 12 class
International School of Zug and Luzern	
International School of Zug and Luzern Walterswil Meryl Siggs CH-6340 Baar Telephone +41 (0)41 768 29 00 Fax +41 (0)41 768 29 01 office.zug@iszl.ch www.iszl.ch	Language: English - Ages 3 - 14 - Primary School (Pre-school to grade 5) - Middle School grade 6 - 8 - IB Primary Years Program
International School of Zug and Luzern Riverside Campus	
David Monk Rothusstrasse 4b CH-6331 Hünenberg Telephone +41 (0)41 768 29 50 office.riverside@iszl.ch www.iszl.ch	Language: English - International School grade 9 - 13 - High School Diploma - International Baccalaureate Diploma - IB Middle Years Program - Advanced Placement Program
International School of Central Switzerland	
Mrs. Jacqueline Webb Lorzenparkstrasse 8 CH-6330 Cham Telephone +41 (0)41 781 44 44 office@Internationalschoolswitzerland.ch www.isocs.ch	Language: English - Primary School grade 1 - 6
Institut Dr. Pfister	
Dr. Gerhard Pfister Gulmstrasse 55 CH-6315 Oberägeri Telephone +41 (0)41 750 12 47 Fax +41 (0)41 750 37 00 info@institut-pfister.ch www.institut-pfister.ch	Language: German - Secondary School - High School



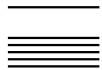
Futura Day school with Montessori Profile	
Renée Classen Rathausstrasse 1 CH-6340 Baar Telephone +41 (0)10 761 32 46 info@furaschule.com www.furaschule.com	Language: German - Primary School with Montessori-Profil - Kindergarten
Kollegium St. Michael	
Robert Gilli Zugerbergstrasse 3 CH-6301 Zug Telephone +41 (0)41 727 12 10 Fax +41 (0)41 727 12 11 rgilli@kollegium-stm.ch www.kollegium-stmichael.ch	Language: German - Primary School grade 5 - 6 - High School - boarding school
School Talentia Zug School for highly gifted children	
Rector Erich Schönbächler Artherstrasse 27 Postfach 4734 CH-6304 Zug Telephone +41 (0)41 710 06 60 erich.schoenbaechler@talentia.ch info@talentia.ch www.talentia.ch	Language: German - Primary school grade 1 - 6 - English tuition grade 1 and up
Handels- und Managementschule HMZ academy AG	
HMZ academy AG Neuhofstrasse 3a CH-6340 Baar Postfach 209 Telephone +41 (0)41 560 76 20 Fax +41 (0)41 560 76 21 info@hmz-academy.ch www.hmz-academy.ch	Language: German - Professional first- and second education as well as further - education in the field of commerce



Information for child-care	
Canton Zug - Departement of the Interior Cantonal Social Departement Brigitta Michel Thenen Neugasse 2 Postfach 146	CH-6301 Zug Telephone +41(0)41 728 39 17 brigitta.michel@zg.ch www.kinderbetreuung-zug.ch
Education-Stepping Stones	
Education-Stepping Stones The School for Early Childhood Education Annemarie Schellinger Im Jöchler CH-6340 Baar Telephone +41 (0)41 760 11 18 www.steppingstones.ch info@steppingstones.ch	Language: English - Kindergarten age 2 - 7
Crèche Pilutje	
Bilingual childcare Ober Altstadt 4 6300 Zug Telephone +41 (0)41 726 03 38 www.pilutje.com	Languages: English / German - Kindergarten age 3 months - 5 years
Montessori Kindergarten of Zug Campus Baar	
Barbara Weiss Obermühle 6 CH-6340 Baar Telephone +41 (0)41 760 51 53 barbara.weiss@montessorizug.ch www.montessorizug.ch	Language: English / German - Kindergarten age 2 and up Information to the Montessori Campus in Cham, you will find on www.montessorizug.ch/de/cham
work & life zug kidswork zug	
Chollerstrasse 23 Sibylle Krauer CH-6300 Zug Telephone +41 (0)41 741 90 90 info@worklife-zug.ch www.worklife-zug.ch	Languages: German / English - Support in the search for suitable care solutions - Bilingual Kindergarten
English Pre-School Teddybär	
Bahnhofsgebäude CH-6318 Walchwil Telephone +41 (0)41 760 94 84 http://www.spielgruppe-walchwil.ch	Language: English - Playgroup - Kinderhüti - Group for young parents - Language course: English

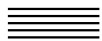


Education Kinderhaus Karussell	
Luzernerstrasse 89 6331 Hünenberg Telephone +41 (0)41 780 92 45 mail@kinderhaus-karussell.ch	Language: English / German - Half day Kindergarten
Elementa Menzingen	
Monica Roth Seminarstrasse 12 CH-6313 Menzingen Telephone +41 (0)41 755 06 50 info@tagesschule-elementa.ch www.tagesschule-elementa.ch	Language: German - Daily School with individual support - Primary school grade 1 - 6
Four-Forest Bilingual International School (ex Bee Hive)	
Four-Forest Bilingual International School Darren Gisler Adelheid-Page-Strasse 1 6330 Cham Telephone +41 (0)41 320 25 31 www.four-forestschooll.ch schulleitung@four-forestschooll.ch	Language: English / German - Playgroup age 2 - 3 - Pre-School age 3 - 4 - Pre-Kindergarten age 4 - 5 - Kindergarten age 5 - 6
Verein Job & Family Little friends	
Blickensdorferstrasse 17 Winnie Haas CH-6312 Steinhausen Telephone +41 (0)41 740 29 65 Fax +41 (0)41 740 29 67 verein@jobandfamily.ch www.jobandfamily.ch	Language: English / German - Kindergarten
Children's World	
Nadja Brunner - Jaehn Lorzenparkstrasse 4 6330 Cham Telefon +41 (0)41 780 01 01 childrensworld@gmail.com www.childrensworld.ch	Language: English / German - Kindergarten age 3 - 6
Skazka Zug	
Elena Castro Altgasse 50 6340 Baar Telefon +41 (0)79 426 53 75 ecastro@pala.com	Language: Russian - Kindergarten age 2 - 6



Service Clubs

Ambassador Club Zug	International Men's Club	Ambassador Club Aegerital
President	President	President
Michael Larsson	Andy Habermacher	Peter Staub
Guggiweg 7	Postfach 4241, 6304 Zug	Raindliweg 4
6300 Zug	Telephone +41 (0)41 711 87 87	6315 Oberägeri
Telephone +41 (0)41 720 20 70	president@imcz.com	Telephone +41 (0)41 750 15 38
www.guidle.com/angebote/2044786	www.imcz.com	blumenoase@bluewin.ch
Inner Wheel Club Zug	International Mums and Kids Club	Kiwanis Club Raten
President	President	President
Silvia Knobel	Janet Hürlimann	Christoph Braschler
Telephone +41 (0)41 710 08 55	Postfach 4345	Seestrasse 10
kontakthanfrage@innerwheelclubzug.ch	6304 Zug	6314 Unterägeri
www.zug.innerwheel.ch	info@imkc.ch	ch.braschler@datazug.ch
	www.imkc.ch	www.kiwanis-raten.ch
Junge Wirtschaftskammer Zugersee	Business & Professional Women Club (BPW)	Ambassador Club Zug Land
President	President	President
Marco Keller	Pia Christen	Cyrill Widmer
In den Wässern B	Bodenstrasse 23	Schulhausstrasse 2
8926 Uerzlikon	6403 Küsnacht a.R.	6312 Steinhausen
Telephone: +41 43 466 50 64	Telephone +41 79 652 04 71	Telephone +41 (0)41 740 03 44
www.guidle.com/angebote/98503	www.bpw-zug.ch	
Kiwanis Club Zug	Kiwanis Club Zug-Zugerland	Kiwanis Club Zug-Ennetsee
President	President	President
Renzo Bader	Peter Studer	Frank Buchser
Guggiweg 5	Gasthaus Bauernhof	Allrütliweg 1
6300 Zug	6340 Baar im Talacher	6343 Rotkreuz
Telephone P. +41 (0) 41 710 12 57	Telefon +41 (0) 41 711 05 27	Tel. P. +41 (0) 79 602 49 32
Telephone G. +41 (0) 41 726 80 00	Fax +41 (0) 41 710 74 42	Tel. G. 41 (0) 41 790 68 67
info@renzo-bader.ch	www.zugerland.kiwanis.ch	president@kiwanis-zug-enetsee.ch
www.kiwanis-zug.ch		www.kiwanis-zug-enetsee.ch



Kanton Zug

Zug International Women's Club	Efficiency Club Zug	Lions Club Zug
President	President	President
Catherine Schopfer	Hatzi Roger	Thomas Schmucki
P.O. Box 4829	Postfach 530	6301 Zug
6304 Zug	6301 Zug	Telephone +41 (0)41 729 00 90
Mobile +41 (0)79 749 13 30	Telephone +41 (0)41 780 73 05	schwendener@bachmann-partner.com
president@ziwc.ch	roger.hatzi@vpbank.com	www.lions-zug.ch
www.ziwc.ch	www.efficiency-club-zug.ch	
Rotary Club Zug-Kolin	Rotary Club Zug	Junge Wirtschaftskammer Zug
President	President	President
Julius Brun	Paul Thalmann	Philipp Hofmann
Giselihalde 6	Telefon P: +41 (0)41 729 10 70	alte Kappelerstrasse 6
6006 Luzern	Telephone G: +41 (0)41 711 52 83	6340 Baar
Telephone +41 (0)41 372 18 50	paul.thalmann@reichlin-hess.ch	Telephone: +41 (0)79 774 66 36
Mobile +41 (0)79 354 76 36	www.rotary-zug.ch	philipp.hofmann@vzug.ch
www.rotary-zug-kolin.ch		www.jcizug.ch
Rotary Club Zugersee	Lions Club Zugerland	Rotaract Club Zug
President	President	President
Walter Suter	Peter Hodel	Anne Cécile Vonlanthen
Rotary Club Zug-Zugersee	Industriestrasse 13c	Postfach 105
Postfach 1158	Postfach 4339	6301 Zug
walter.suter@rotary-zug-zugersee.ch	6304 Zug	info@rotaract-zug.ch
Telephone: +41 (0)41 780 78 86	Telephone +41 (0)41 728 62 72	www.rotaract-zug.ch
www.rotary-zug-zugersee.ch	peter.hodel@jodel-frei.ch	
Rotary Club Ägeri-Menzingen	Rotary Club Zugerland	Round Table Zug
President	President	President
Christian Thöni	Jean-Pierre Somani	Ivan Schweizer
Postfach 408	Seemattstrasse 2a	Neuhofstrasse 13
6314 Unterägeri	6331 Hünenberg	6345 Neuheim
praesident@rc-aegeri-menzingen.ch	Telephone +41 (0)41 780 80 18	Mobile +41 (0)76 441 23 84
www.rc-aegeri-menzingen.ch	jp-sormani@bluewin.ch	ivan.schweizer@advendes.ch
	www.rotary-zugerland.ch mailto:Iris.studermilz@rech.zg.ch	www.roundtable.ch
Panathlon Club Zug	Soroptimist International Club Zug	Lions Club Zug Kolin
President	President	President
Philipp Felber	Dorte Andersen	Pascal Niquille
Ackerstrasse 8	Dorfstrasse 26	pascal@niquille.com



Kanton Zug

6300 Zug	6319 Allenwinden	www.lionsbase.org
Telephone +41 (0)41 710 53 30	www.soroptimist-zug.ch	

Further Information

By sending in the coupon below, you can obtain the following additional documentation:

- List of vacant office, business, manufacturing and storage real estate in the Canton of Zug
- List of legal practices in the Canton of Zug
- Membership list of the Trustee Association of Zug

Please send the coupon to the following address:

Volkswirtschaftsdirektion des Kantons Zug
Economic promotion
Aabachstrasse 5
CH-6301 Zug
Tel. +41 (0)41 728 55 04
Fax +41(0)41 728 55 09
economy@zug.ch
www.zug.ch/economy

Order Coupon

Please send me the following documentation:

- List of vacant office, business, retail, production and storage real estate in the Canton of Zug
- List of legal practices in the Canton of Zug
- Membership list of the Trustee Association of Zug

Address
