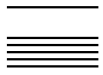




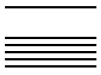
Your partners in the Canton of Zug

Economic promotion Zug	Zug Chamber of Economy	Fiduciary Association of Zug
Dr. Hans Marti Aabachstrasse 5 CH-6301 Zug Telephone +41 (0)41 728 55 04 Fax +41 (0)41 728 55 09 economy@zug.ch www.zug.ch/economy	Tanja Süssmeier Gubelstrasse 11 CH-6300 Zug Telephone +41 (0)41 726 99 61 Fax +41 (0)41 726 99 60 office@zwk.ch www.zwk.ch	Andreas Schaufelberger Dorfstrasse 38 CH-6340 Baar Telephone +41 (0)41 769 79 69 Fax +41 (0)41 769 79 89 info@ztv-zug.ch www.ztv-zug.ch
Office for economy and labor	Small Business Association of the Canton of Zug	Association of Attorneys of the Canton of Zug
Dr. Bernhard Neidhart Aabachstrasse 5 CH-6301 Zug Telephone +41 (0)41 728 55 21 Fax +41 (0)41 728 55 29 bernhard.neidhart@zg.ch www.zug.ch/awa	Irène Castell-Bachmann Gartenstrasse 4 CH-6304 Zug Telephone +41 (0)41 711 47 22 Fax +41 (0)41 710 00 93 info@zugergewerbe.ch www.zugergewerbe.ch	Werner Goldmann Dorfstrasse 16 CH-6341 Baar Telephone +41 (0)41 767 46 46 Fax +41 (0)41 767 46 25 info@advokaten-zug.ch www.advokaten-zug.ch
Tax administration of the Canton of Zug	HR-Services-Zug (HRSZ)	tfz technologie forum zug
Dr. Hugo Wyssen Bahnhofstrasse 26 CH-6301 Zug Telephone +41 (0)41 728 26 11 Fax +41 (0)41 728 26 96 hugo.wyssen@zg.ch www.zug.ch/tax	Marion Russek Grafenaustrasse 5 6300 Zug Telephone +41 (0)41 740 12 06 vorstand@hrsz.ch www.hrsz.ch	Ivo Studer Dammstrasse 19 CH-6301 Zug Telephone +41 (0)41 723 23 66 Fax +41 (0)41 723 23 69 ivo.studer@ technologieforumzug.ch www.technologieforumzug.ch
Office for Migration	Businesspark Zug	
Georg Blum Aabachstrasse 1 CH-6301 Zug Telephone +41 (0)41 728 50 50 Fax +41 (0)41 728 50 59 georg.blum@zg.ch www.zug.ch/afm	Roman Bühler Sumpfstrasse 26 CH-6301 Zug Telephone +41 (0)41 747 01 40 Fax +41 (0)41 747 01 41 info@businessparkzug.ch www.businessparkzug.ch	



International enterprises

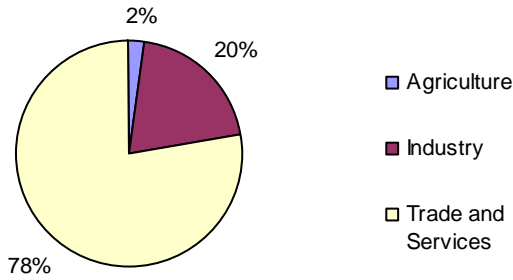
- Adidas, Cham
- Amgen (Schweiz, Europe, International) GmbH, Zug
- Astra-Zeneca AG, Zug
- Avery Denison Office Products Europe GmbH, Steinhausen
- BASF Intertrade AG, Zug
- Bausch & Lomb Swiss AG, Zug
- Biogen Idec International GmbH, Zug
- British American Tobacco International Ltd., Zug
- Bossard AG, Zug
- BP (Switzerland), Zug
- Bristol-Myers Squibb Products SA, Baar
- Burger King, Zug
- Cham Paper Group AG, Cham
- Cilag AG International (Johnson & Johnson), Zug
- Crypto AG, Steinhausen
- Emerson Process AG (ex. Fisher Rosemount), Baar
- ESAB Europe AG, Baar
- Glencore International, Baar
- Hugo Boss (Schweiz) AG, Zug
- Janssen-Cilag AG, Baar
- Landis + Gyr, Zug
- Mars AG, Zug
- Medela AG, Baar
- MIAG c.v. (Metro International), Baar
- Porsche (Schweiz) AG, Steinhausen
- PPC Electronic AG, Cham
- Rittmeyer AG, Baar
- Roche Diagnostics AG, Rotkreuz
- SABMiller (Europe) AG, Baar
- Schiller AG, Baar
- SHELL (Switzerland) AG, Baar
- Siemens Building Technologies, Zug
- Sika AG, Baar
- Smith & Nephew AG, Baar
- Taloca AG (Kraft Jacobs Suchard / Philip Morris), Zug
- Thomson Reuters, Zug
- Trumpf Maschinen AG, Baar
- ESEC, Steinhausen
- Varian International AG, Zug
- V-Zug AG, Zug



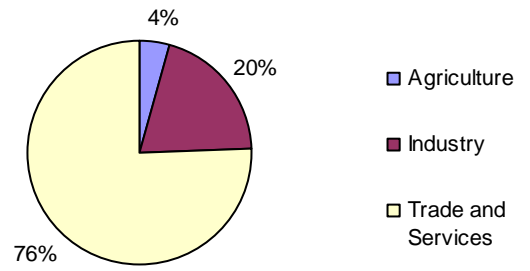
Commercial structure

All sectors

**Canton of Zug
2008**

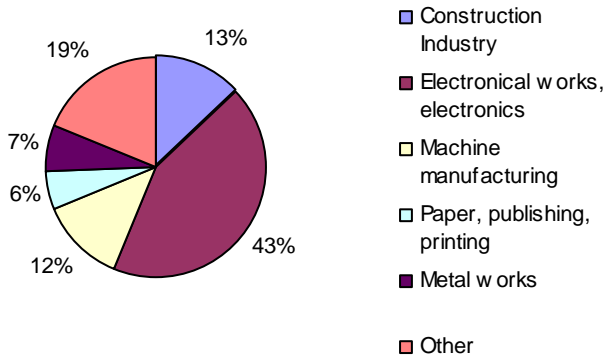


**Switzerland
2008**

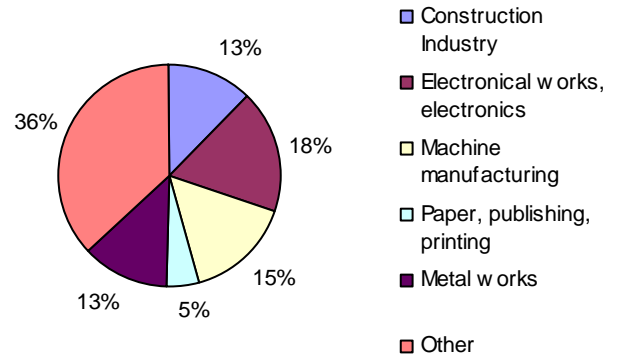


Industry

**Canton of Zug
2008**

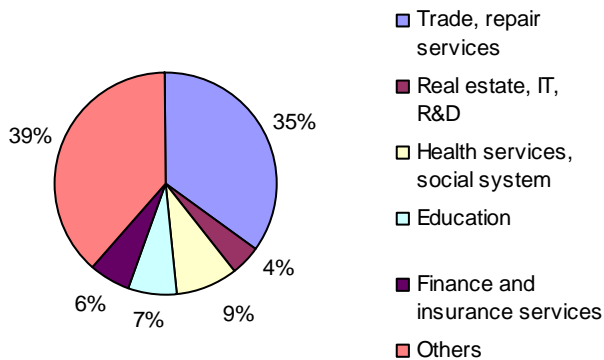


**Switzerland
2008**

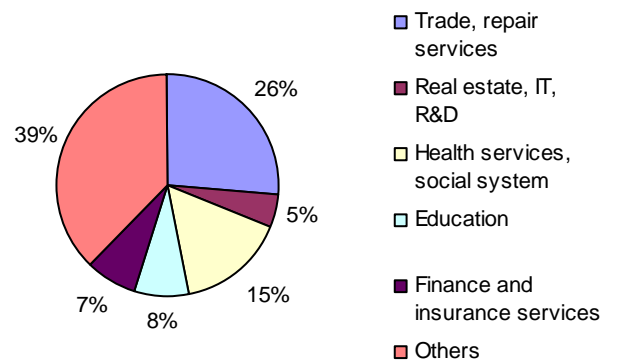


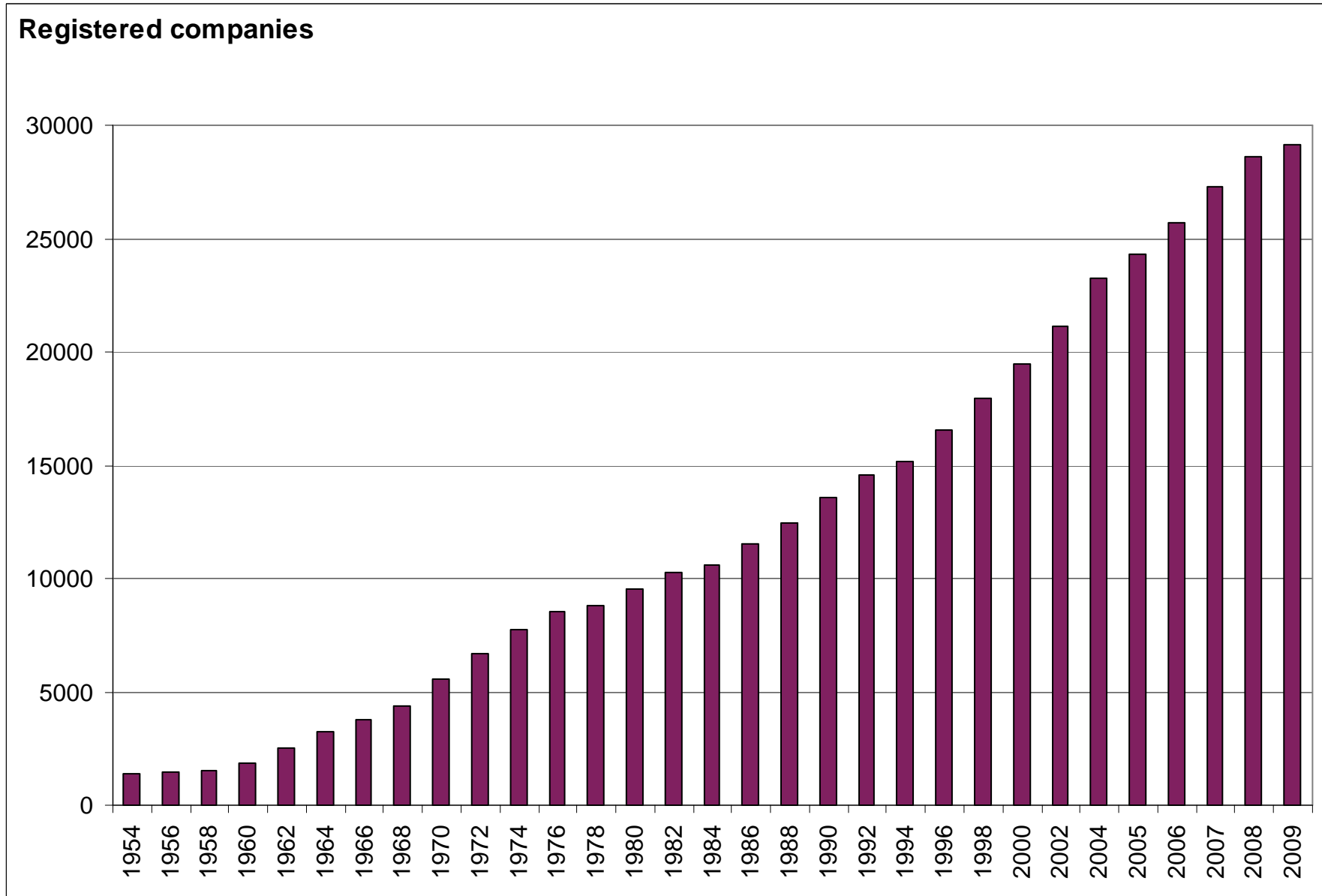
Trade and services

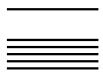
**Canton of Zug
2008**



**Switzerland
2008**



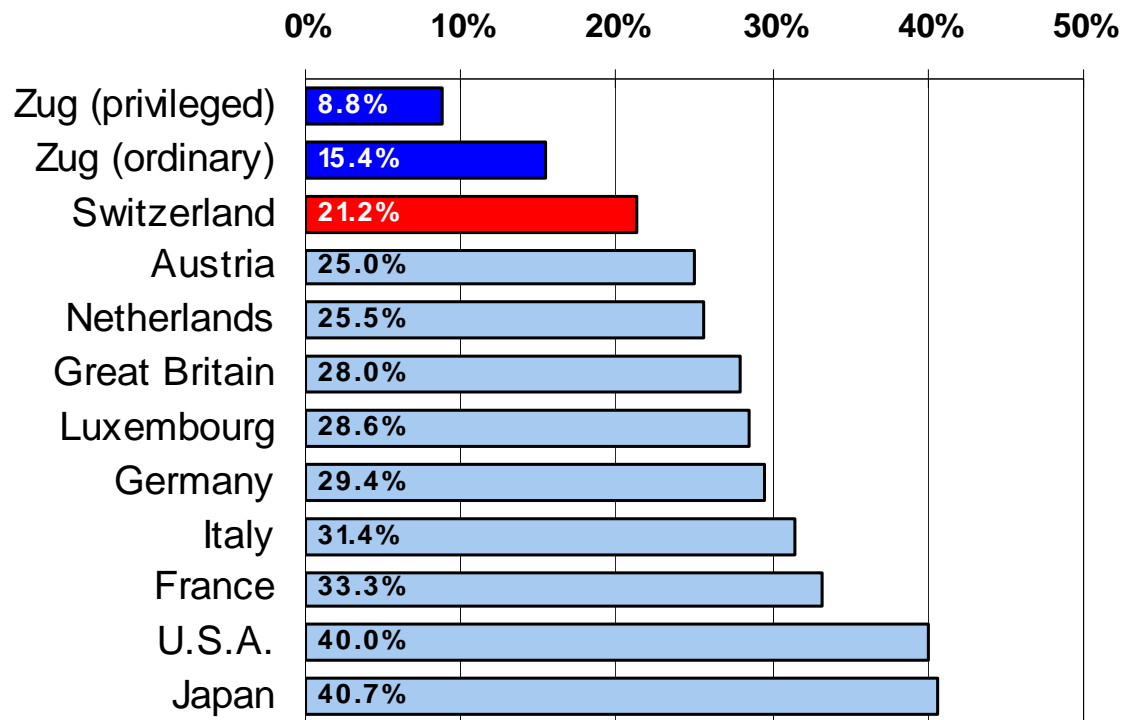




International tax comparison

Corporate entities

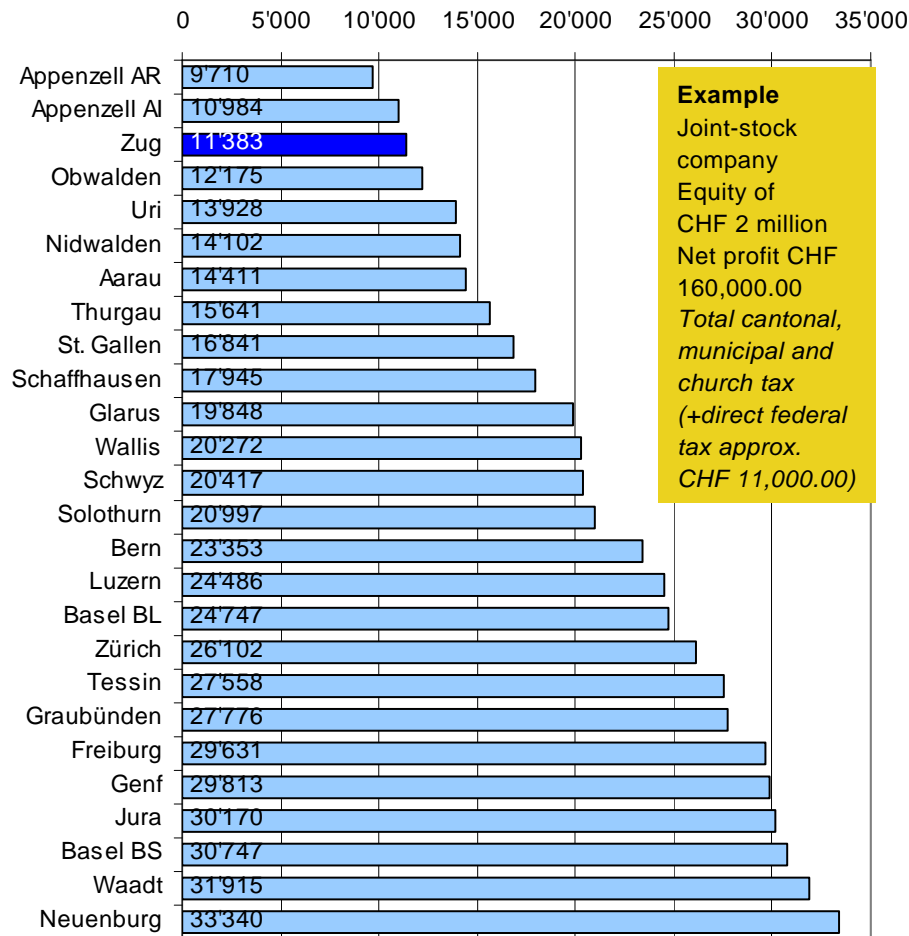
Average tax levy corporate profit



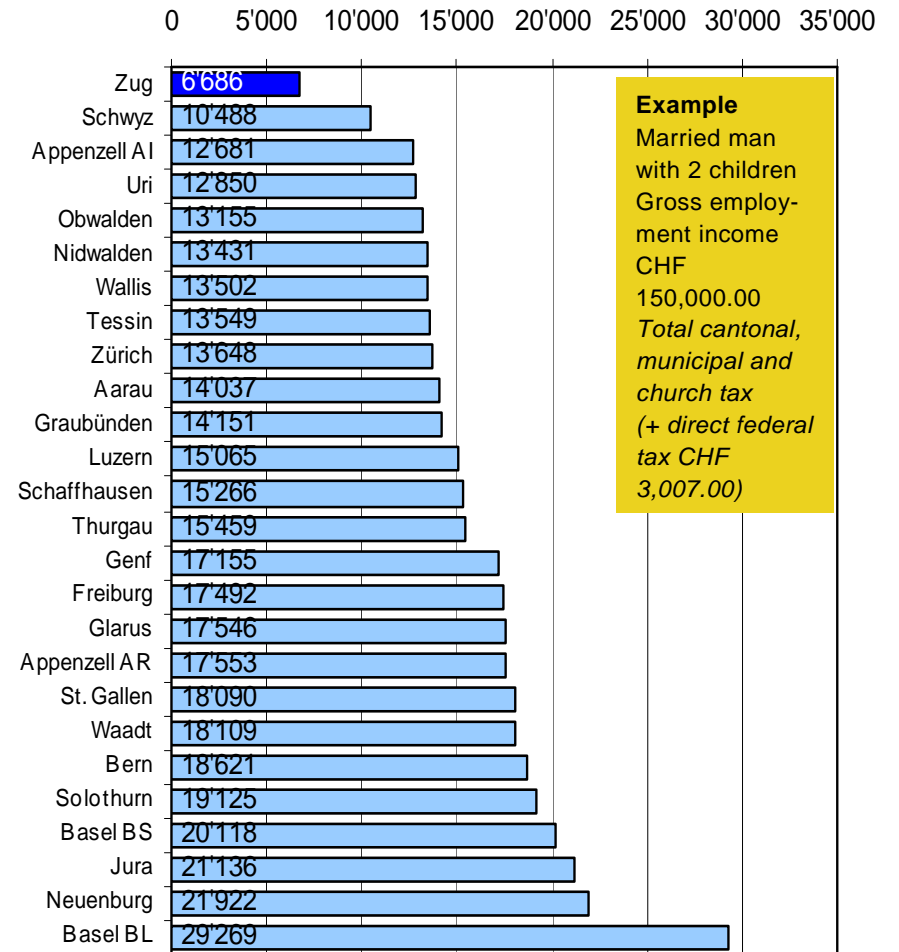
Sources: KPMG's Corporate and Individual Tax Rate Survey 2010
Income Tax Rates, 2010
Tax Department KPMG Zug

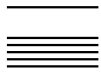
Intercantonal tax comparison (taxes in the capital of the respective canton)

Corporate entities



Private individuals





Work and residence permits

Foreigners who want to work in Switzerland must apply for a permit.

EU/EFTA citizens

With the introduction of the Free Movement of Persons (FMP) as part of the bi-lateral treaties with the EU/EFTA basically the salary and working conditions customary for the location and the line of business have to be maintained. For a stay with gainful employment of up to three months in a calendar year there is a registration obligation for employees, independent service providers and members of staff on assignment from abroad. The registration form (Meldeformular) can be completed electronically via www.bfm.admin.ch and sent off. Occupation for three months upwards is subject to a permit (enclosing an employment contract or a confirmation of the employer). In addition, occupation for more than four months is subject to the issuance of quotas. Applications are to be submitted to the Office for Matters regarding Foreigners (Amt für Ausländerfragen - KAFA).

Amt für Migration

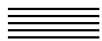
Aabachstrasse 1
6300 Zug
Telephone +41 (0)41 728 50 50
Fax +41 (0)41 728 50 59
E-Mail: info.afm@sd.zg.ch
www.zug.ch/afm

EU-2-States (Romania and Bulgaria) and non-EU/EFTA citizens

EU-2-Citizens are still subject to the issue of quotas. Priority of domestic employees still applies as well as the maintenance of salary and working conditions customary for the location and the line of business. Strict regulations apply to the gainful employment of Non-EU/EFTA citizens. For further information please contact the Office for Economy and Labour (Amt für Wirtschaft und Arbeit), where to the applications have also to be addressed.

Amt für Wirtschaft und Arbeit

Telephone +41 (0)41 728 55 20
Fax +41 (0)41 728 55 29
E-Mail: info.awa@vd.zg.ch
www.zug.ch/awa



Contact people in the communities

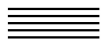
Zug	Baar	Risch
Marcel Grepper Stadthaus / Kolinplatz CH-6301 Zug Telephone +41 (0)41 728 21 12 Fax +41 (0)41 728 23 71 marcel.grepper@zug.zg.ch www.stadtzug.ch	Tanja Rogenmoser Rathausstrasse 6 CH-6341 Baar Telephone +41 (0)41 769 02 20 Fax +41 (0)41 769 02 90 tanja.rogenmoser@baar.zg.ch www.baar.ch	Peter Trachsel Zentrum Dorfmat CH-6343 Rotkreuz Telephone +41 (0)41 798 18 61 Fax +41 (0)41 798 18 88 peter.trachsel@risch.zg.ch www.gemeinderisch.ch
Menzingen	Cham	Walchwil
Paul Schönenberger Rathaus CH-6313 Menzingen Telephone +41 (0)41 757 22 10 Fax +41 (0)41 757 22 11 info@menzingen.zg.ch www.menzingen.ch	Martin Mengis Mandelhof CH-6330 Cham Telephone +41 (0)41 784 47 47 Fax +41 (0)41 784 47 74 martin.mengis@cham.zg.ch www.cham.ch	René Arnold Dorfstrasse 4 CH-6318 Walchwil Telephone +41 (0)41 759 80 16 Fax +41 (0)41 758 24 68 rene.arnold@walchwil.zg.ch www.walchwil.ch
Unterägeri	Hünenberg	Neuheim
Sylvia Derrer Seestrasse 2 CH-6314 Unterägeri Telephone +41 (0)41 754 55 00 Fax +41 (0)41 754 55 55 sylvia.derrer@unteraegeri.zg.ch www.unteraegeri.ch	Guido Wetli Chamerstrasse 11 CH-6331 Hünenberg Telephone +41 (0)41 784 44 00 Fax +41 (0)41 784 44 99 guido.wetli@huenenberg.zg.ch www.huenenberg.ch	Christof Wicky Dorfplatz 5 CH-6345 Neuheim Telephone +41 (0)41 757 21 31 Fax +41 (0)41 757 21 40 christof.wicky@neuheim.zg.ch www.neuheim.ch
Oberägeri	Steinhausen	
Jürg Meier Rathaus Alosenstrasse 2 CH-6315 Oberägeri Telephone +41 (0)41 754 70 25 Fax +41 (0)41 754 70 21 juerg.meier@oberaegeri.zg.ch www.oberaegeri.ch	Hans Schnellmann Bahnhofstrasse 3 CH-6312 Steinhausen Telephone +41 (0)41 748 11 13 Fax +41 (0)41 741 31 81 hans.schnellmann@steinhausen.zg.ch www.steinhausen.ch	

The communities of the Canton of Zug

Community	Population ¹	Workplaces ²	Operating companies ²	Square meters	Altitude
Zug	26'713	31'851	3'994	35.45 km ²	425 m ü.M.
Oberägeri	5'645	1'535	323	35.60 km ²	737 m ü.M.
Unterägeri	8'277	2'695	416	27.10 km ²	729 m ü.M.
Menzingen	4'634	1'571	292	27.63 km ²	807 m ü.M.
Baar	22'443	17'038	2'102	24.88 km ²	444 m ü.M.
Cham	14'923	7'932	1'093	19.82 km ²	418 m ü.M.
Hünenberg	8'836	4'532	709	18.54 km ²	451 m ü.M.
Steinhausen	9'354	5'990	609	4.96 km ²	424 m ü.M.
Risch	9'301	7'789	716	20.95 km ²	417 m ü.M.
Walchwil	3'668	988	224	15.67 km ²	449 m ü.M.
Neuheim	2'037	1'081	166	7.95 km ²	666 m ü.M.
Total	115'831	83'002	10'644	238.55 km²	

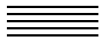
1 Status as of 31.12.2010

2 Source: Federal corporate census 2008



Private schools

Institut Montana Zugerberg	
Balz Müller	Language: German / English (bilingual)
Institut Montana Zugerberg Switzerland CH-6300 Zug	- Bilingual Elementary School grade 1 - 6 - Schweizer Gymnasium 7 - 12 class
Telephone +41 (0)41 729 11 77	Language: English
Fax +41 (0)41 729 11 78	- IGCSE Programme grade 7 - 10
balz.mueller@montana-zug.ch	- IB Program grade 11 - 12
www.montana-zug.ch	Language: German
	- Gymnasium 7 - 12 class
International School of Zug and Luzern	
Walterswil	Language: English
Meryl Siggs	- Ages 3 - 14
CH-6340 Baar	- Primary School (Pre-school to grad 5)
Telephone +41 (0)41 768 29 00	- Middle School grade 6 - 8
Fax +41 (0)41 768 29 01	- IB Primary Years Program
office.zug@iszl.ch	
www.iszl.ch	
International School of Zug and Luzern Riverside Campus	
David Monk	Language: English
Rothusstrasse 4b	- International School grade 9 - 13
CH-6331 Hünenberg	- High School Diploma
Telephone +41 (0)41 768 29 50	- International Baccalaureate Diploma
office.riverside@iszl.ch	- IB Middle Years Program
www.iszl.ch	- Advanced Placement Program
International School of Central Switzerland	
Jacqueline Webb	Language: English
Lorzenparkstrasse 8	- Primary School grade 1 - 6
CH-6330 Cham	
Telephone +41 (0)41 781 44 44	
office@internationalschoolswitzerland.ch	
www.isocs.ch	
SIS Swiss International School	
Thomas Huber	Language: German / English
Suurstoffi	- Kindergarten
CH-6343 Rotkreuz	- Primary School grade 1 - 6
Telephone +41 (0)61 683 71 42	- Swiss High School Diploma
info.rotkreuz@swissinternationalschool.ch	- International Baccalaureate Diploma
www.swissinternationalschool.ch	



Institut Dr. Pfister

Dr. Gerhard Pfister
Gulmstrasse 55
CH-6315 Oberägeri
Telephone +41 (0)41 750 12 47
Fax +41 (0)41 750 37 00
info@institut-pfister.ch
www.institut-pfister.ch

Language: German

- Secondary School
- High School

Futura

Day school with Montessori Profile

Renée Classen
Rathausstrasse 1
CH-6340 Baar
Telephone +41 (0)41 761 32 46
info@futureschule.com
www.futureschule.com

Language: German

- Kindergarten
- Primary School with Montessori Profile

Kollegium St. Michael

Robert Gilli
Zugerbergstrasse 3
CH-6301 Zug
Telephone +41 (0)41 727 12 10
Fax +41 (0)41 727 12 11
rgilli@kollegium-stm.ch
www.kollegium-stmichael.ch

Language: German

- Primary School grade 5 - 6
- High School
- boarding school

School Talentia Zug

School for highly gifted children

Rector
Erich Schönbächler
Artherstrasse 27
Postfach 4734
CH-6304 Zug
Telephone +41 (0)41 710 06 60
Mobile +41 (0)79 814 18 19
info@talentia.ch
www.talentia.ch

Language: German

- Primary School grade 1 - 6
- English tuition grade 1 and up

Handels- und Managementschule

HMZ academy AG

Neuhofstrasse 3a
CH-6340 Baar
Postfach 209
Telephone +41 (0)41 560 76 20
info@hmz-academy.ch
www.hmz-academy.ch

Language: German

- Professional first and second education as well as further
- Education in the field of commerce



Informationen for childcare

Canton Zug - Departement of the Interior
Cantonal Social Departement
Brigitta Michel Thenen
Neugasse 2
Postfach 146

CH-6301 Zug
Telephone +41(0)41 728 39 17
Fax +41 (0)41 728 37 17
brigitta.michel@zg.ch
www.kinderbetreuung-zug.ch

Education-Stepping Stones

Education-Stepping Stones
The School for Early Childhood Education
Annemarie Schellinger
Im Jöchler
CH-6340 Baar
Telephone +41 (0)41 760 11 18
www.steppingstones.ch
info@steppingstones.ch

Language: English
- Kindergarten age 2 - 7

Crèche Pilutje

Bilingual childcare
Ober Altstadt 4
CH-6300 Zug
Telephone +41 (0)41 726 03 38
www.pilutje.com
info@pilutje.com

Languages: English / German
- Kindergarten age 3 months - 5 years

Montessori Kindergarten of Zug Campus Baar

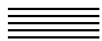
Barbara Weiss
Obermühle 6
CH-6340 Baar
Telephone +41 (0)41 760 51 53
barbara.weiss@montessorizug.ch
www.montessorizug.ch

Languages: English / German
- Kindergarten age 2 and up
- Informationen to the Montessori Campus in Cham on www.montessorizug.ch/de/cham

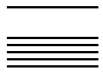
work & life zug kidswork zug

Chollerstrasse 23
Sibylle Krauer
CH-6300 Zug
Telephone +41 (0)41 741 90 90
Fax +41 (0)41 741 90 91
info@worklife-zug.ch
www.worklife-zug.ch

Languages: German / English
- Support in the search for suitable care solutions
- Bilingual Kindergarten



English Pre-School Teddybär	
Bahnhofsgebäude CH-6318 Walchwil Telephone +41 (0)41 758 28 29 www.spielgruppe-walchwil.ch	Language: English - Playgroup - Kinderhüti - Group for young parents - Language course: English
Education Kinderhaus Karussell	
Luzernerstrasse 89 CH-6331 Hünenberg Telephone +41 (0)41 780 92 45 mail@kinderhaus-karussell.ch	Language: German / English - Half day Kindergarten
Elementa Menzingen	
Monica Roth Seminarstrasse 12 CH-6313 Menzingen Telephone +41 (0)41 755 06 50 info@tagesschule-elementa.ch www.tagesschule-elementa.ch	Language: German - Daily school with individual support - Primary school grade 1 - 6
Four-Forest Bilingual International School (ex Bee Hive)	
Four-Forest Bilingual International School Darren Gisler Adelheid-Page-Strasse 1 CH-6330 Cham Telephone +41 (0)41 320 25 31 www.four-forestschool.ch darren.gisler@four-forestschool.ch	Language: English / German - Playgroup age 2 - 3 - Pre-School age 3 - 4 - Pre-Kindergarten age 4 - 5 - Kindergarten age 5 - 6
Verein Job & Family Little friends	
Blickensdorferstrasse 17 Winnie Haas CH-6312 Steinhausen Telephone +41 (0)41 740 29 65 verein@jobandfamily.ch www.jobandfamily.ch	Language: English / German - Kindergarten



Children's World

Nadja Brunner - Jaehn
Lorzenparkstrasse 4
CH-6330 Cham
Telephone +41 (0)41 780 01 01
childrensworld@gmail.com
www.childrensworld.ch

Language: English / Deutsch

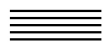
- Kindergarten age 3 - 6

Skazka Zug

Elena Castro
Altgasse 50
CH-6340 Baar
Telephone +41 (0)79 426 53 75
ecastro@pala.com

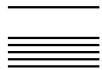
Language: Russian

- Kindergarten age 2 - 6



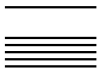
Service Clubs

Ambassador Club Zug	International Men's Club	Ambassador Club Aegerital
President Michael Larsson Guggiweg 7 6300 Zug Telephone +41 (0)41 720 20 70 www.guidle.com/angebote/2044786	President Andy Habermacher Postfach 4241, 6304 Zug Telephone +41 (0)41 711 87 87 president@imcz.com www.imcz.com	President Peter Staub Raindliweg 4 6315 Oberägeri Telephone +41 (0)41 750 15 38 blumenoase@bluewin.ch
Inner Wheel Club Zug	International Mums and Kids Club	Kiwanis Club Raten
President Silvia Knobel Telephone +41 (0)41 710 08 55 kontakthanfrage@innerwheelclubzug.ch www.zug.innerwheel.ch	President Janet Hürlimann Postfach 4345 6304 Zug info@imkc.ch www.imkc.ch	President Christoph Braschler Seestrasse 10 6314 Unterägeri ch.braschler@datazug.ch www.kiwanis-raten.ch
Junge Wirtschaftskammer Zugersee	Business & Professional Women Club (BPW)	Ambassador Club Zug Land
President Marco Keller In den Wässern B 8926 Uerzlikon Telephone: +41 43 466 50 64 www.guidle.com/angebote/98503	President Pia Christen Bodenstrasse 23 6403 Küsnacht a.R. Telephone +41 79 652 04 71 www.bpw-zug.ch	President Cyrill Widmer Schulhausstrasse 2 6312 Steinhausen Telephone +41 (0)41 740 03 44
Kiwanis Club Zug	Kiwanis Club Zug-Zugerland	Kiwanis Club Zug-Ennetsee
President Renzo Bader Guggiweg 5 6300 Zug Telephone P. +41 (0) 41 710 12 57 Telephone G. +41 (0) 41 726 80 00 info@renzo-bader.ch www.kiwanis-zug.ch	President Peter Studer Gasthaus Bauernhof 6340 Baar im Talacher Telefon +41 (0) 41 711 05 27 Fax +41 (0) 41 710 74 42 www.zugerland.kiwanis.ch	President Frank Buchser Allrütiweg 1 6343 Rotkreuz Tel. P. +41 (0) 79 602 49 32 Tel. G. 41 (0) 41 790 68 67 president@kiwanis-zug-enetsee.ch www.kiwanis-zug-enetsee.ch



Kanton Zug

Zug International Women's Club	Efficiency Club Zug	Lions Club Zug
President Catherine Schopfer P.O. Box 4829 6304 Zug Mobile +41 (0)79 749 13 30 president@ziwc.ch www.ziwc.ch	President Hatzi Roger Postfach 530 6301 Zug Telephone +41 (0)41 780 73 05 roger.hatzi@vpbank.com www.efficiency-club-zug.ch	President Thomas Schmucki 6301 Zug Telephone +41 (0)41 729 00 90 schwendener@bachmann-partner.com www.lions-zug.ch
Rotary Club Zug-Kolin	Rotary Club Zug	Junge Wirtschaftskammer Zug
President Julius Brun Giselihalde 6 6006 Luzern Telephone +41 (0)41 372 18 50 Mobile +41 (0)79 354 76 36 www.rotary-zug-kolin.ch	President Paul Thalmann Telefon P: +41 (0)41 729 10 70 Telephone G: +41 (0)41 711 52 83 paul.thalmann@reichlin -hess.ch www.rotary-zug.ch	President Philipp Hofmann alte Kappelerstrasse 6 6340 Baar Telephone: +41 (0)79 774 66 36 philipp.hofmann@vzug.ch www.jcizug.ch
Rotary Club Zugersee	Lions Club Zugerland	Rotaract Club Zug
President Walter Suter Rotary Club Zug-Zugersee Postfach 1158 walter.suter@rotary-zug-zugersee.ch Telephone: +41 (0)41 780 78 86 www.rotary-zug-zugersee.ch	President Peter Hodel Industriestrasse 13c Postfach 4339 6304 Zug Telephone +41 (0)41 728 62 72 peter.hodel@jodel-frei.ch	President Anne Cécile Vonlanthen Postfach 105 6301 Zug info@rotaract-zug.ch www.rotaract-zug.ch
Rotary Club Ägeri-Menzingen	Rotary Club Zugerland	Round Table Zug
President Christian Thöni Postfach 408 6314 Unterägeri praesident@rc-aegeri-menzingen.ch www.rc-aegeri-menzingen.ch	President Jean-Pierre Somani Seemattstrasse 2a 6331 Hünenberg Telephone +41 (0)41 780 80 18 jp-sormani@bluewin.ch www.rotaryzugeland.ch	President Ivan Schweizer Neuhofstrasse 13 6345 Neuheim Mobile +41 (0)76 441 23 84 ivan.schweizer@advendes.ch www.roundtable.ch
Panathlon Club Zug	Soroptimist International Club Zug	Lions Club Zug Kolin
President Philipp Felber Ackerstrasse 8 6300 Zug Telephone +41 (0)41 710 53 30	President Dorte Andersen Dorfstrasse 26 6319 Allenwinden www.soroptimist-zug.ch	President Pascal Niquille pascal@niquille.com www.lionsbase.org



Kanton Zug

Further Information

By sending in the coupon below, you can obtain the following additional documentation:

- List of vacant office, business, manufacturing and storage real estate in the Canton of Zug
- List of legal practices in the Canton of Zug
- Membership list of the Trustee Association of Zug

Please send the coupon to the following address:

Volkswirtschaftsdirektion des Kantons Zug

Economic promotion

Aabachstrasse 5

CH-6301 Zug

Tel. +41 (0)41 728 55 04

Fax +41(0)41 728 55 09

economy@zug.ch

www.zug.ch/economy

Order Coupon

Please send me the following documentation:

- List of vacant office, business, retail, production and storage real estate in the Canton of Zug
- List of legal practices in the Canton of Zug
- Membership list of the Trustee Association of Zug

Address
